



MV Sunrise



General Info

Built	2011
Flag	Antigua & Barbuda
IMO No.	9590060
Class	DNV GL 100 A5 Bulk Carrier (holds 2, 4, 6 and 8 may be empty) BC(A) CSR DBC ESP Grab (30t) IW MC AUT CM-PS
Type	Bulk Carrier 179.168,50 mt

Hold & Hatches

Hold & Hatches	9/9
Hatch covers	weathertight side rolling, wheel lifter, electric- hydraulic motor driven
Hatch dimensions	Hatch 1/9: 15,6 x 17,2 m Hatch 2-8: 15,6 x 20,6 m
Grain	97.598,50 m ³
Hold ventilation	5-8 air changes / h

Tonnage

Dwat	179.168,50 mtons
GT / NT	93.010 / 59.356

Dimensions

Length over all	292,00 m
Breadth over all	45,00 m
Depth	24,80 m
Draught [S]	18,30 m
Draught (Ballast)	7,95 m (normal) 9,28 m (max.)

Consumption

Sea - Laden	57 mtons
Port - Idle	5 mtons

Permissible loads

Tanktop / sqm	Holds 2,4,6,8: 24,20 mtons Holds 1,3,5,7: 41,90 mtons Hold 9: 42,10 mtons
---------------	---

Main Engine Data

Main engine	MAN B&W 6S70ME-C7 TIER II 18.660 kW
-------------	--

Aux. Engine / Emergency Engine

Aux. engine	3 x 730 kW
Emergency engine	150 kW

Speed

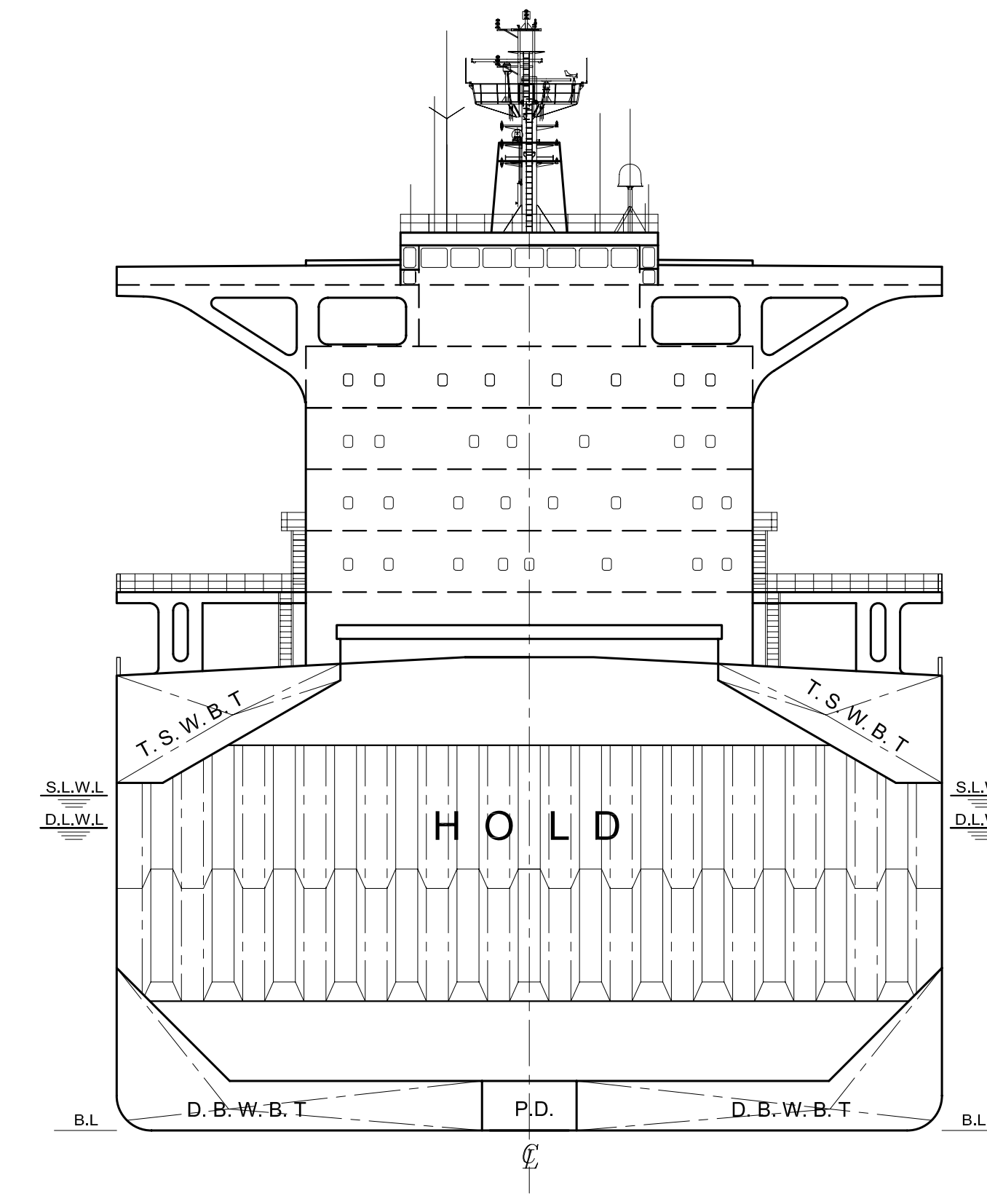
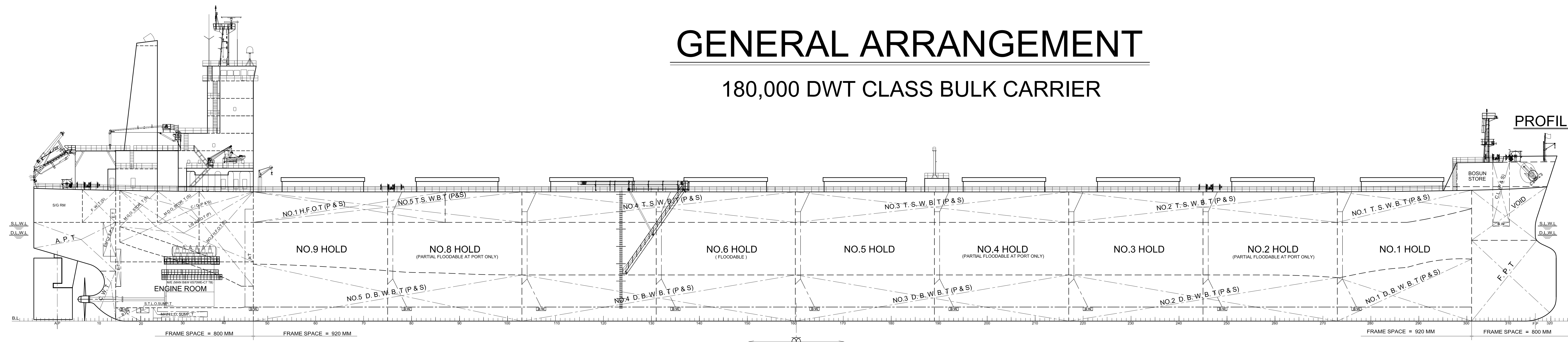
15 knots

Tank capacity

Fuel IFO	4.841,00 m ³
Fuel MDO	585,30 m ³
Freshwater	500,00 m ³
Ballast	78.934,00 m ³

GENERAL ARRANGEMENT

180,000 DWT CLASS BULK CARRIER



E/R 3RD DECK

E/R 2ND DECK

A DECK

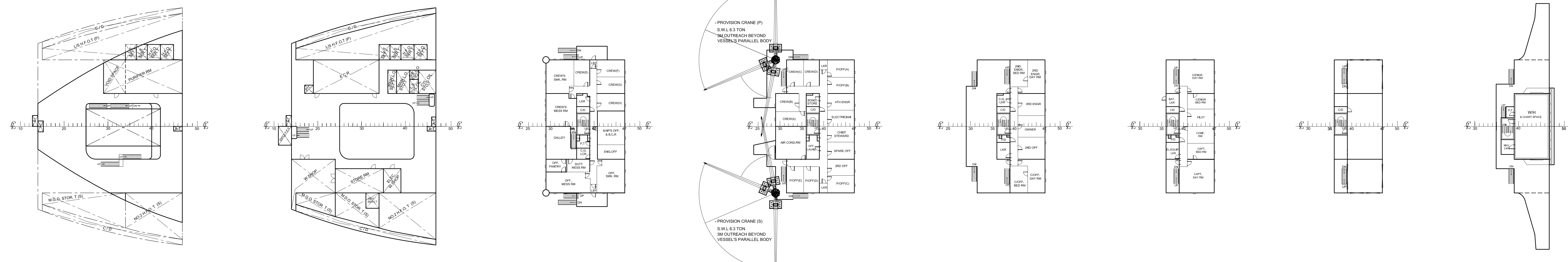
B DECK

C DECK

D DECK

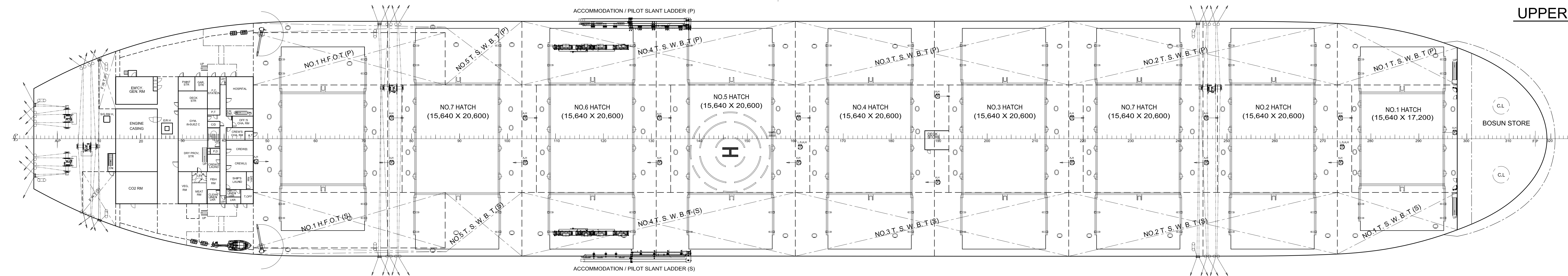
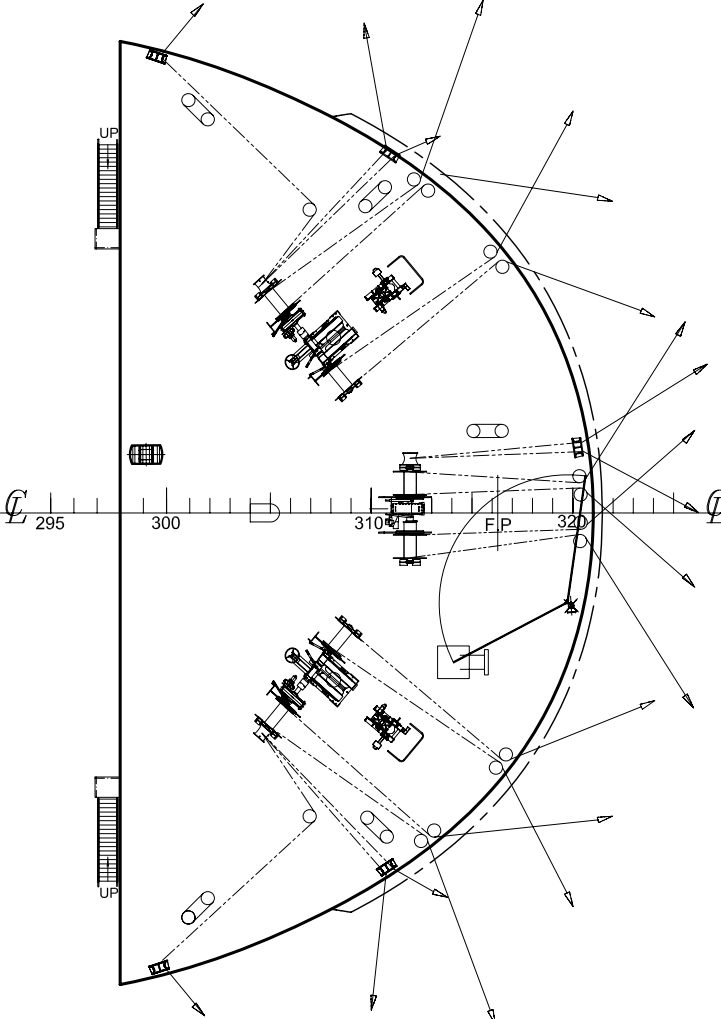
DUMMY DECK

NAV. DECK

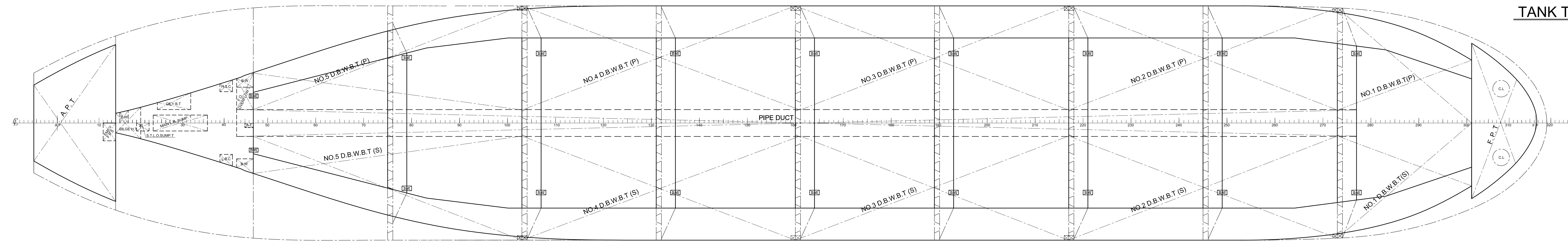


UPPER DECK

F'CLE DECK



TANK TOP



PLAN HISTORY						
DATE	SHIP NO.	REV.	DESCRIPTION	DWN.	CHK.	APP.
APR. 15, '10	S1122	Δ	PREPARED FOR APPROVAL	M.K.K.M.	J.H.YOON	J.W.SON

PRINCIPAL PARTICULARS

LENGTH O. A.	ABT.	292.0	M
LENGTH B. P.		283.5	M
BREADTH (MLD.)		45.0	M
DEPTH (MLD.)		24.8	M
DRAFT DESIGN (MLD.)		16.5	M
DRAFT SCANT. (MLD.)		18.3	M
MAIN ENGINE	TYPE	MAN B&W 6S70ME-C7	TIER II
	N.M.C.R.	18,660 KW X 91	RPM
	S.M.C.R.	18,660 KW X 91	RPM
	N.C.R.	15,861 KW X 86.2	RPM

FREEBOARD : "B-60" TYPE
 CLASSIFICATION : DNV
 *1A1 BULK CARRIER, ESP, ES(S), CSR, BCA(HOLD NO. 2, 4, 6 & 8 MAY BE EMPTY), E0, BIS, TMON, BWM-E(S), GRAB(30)

This drawing or document is the property of SSME and must not be partially or wholly copied or used for any other purpose without prior written permission of SSME

SHIP NO.	S1122	SHIP TYPE	180,000 DWT CLASS BULK CARRIER
DEPT	HULL FORM & PROPULSION PERFORMANCE RESEARCH	TITLE	GENERAL ARRANGEMENT
APP. BY	J.W.SON	DWG NO.	20081010168B
CHK. BY	J.H.YOON	SCALE	1/300
DWN. BY	M.K.K.M.	DATE	APR. 15, '10
		REV. NO.	Δ

