



## MV Lake St. Clair



### General Info

Built	2005
Flag	Antigua & Barbuda
IMO No.	9315549
Class	GL 100 A5 E G IW BWM-S ESP Solas II-2 reg. 19 Bulk Carrier + MC Aut
Type	Geared Bulk Carrier 28.000 t

### Hold & Hatches

Hold & Hatches	5
Hatch covers	hydraulic folding type, steel, watertight
Grain	1.214.023 cbft
Bale	1.155.849 cbft
Bulkheads	1 moveable bulkhead, 3 positions
ventilation	6 x air exchange / h

### Tonnage

Dwt summer	27.783 t
Dwt winter	26.975 t
GT / NT	18.852 / 8.565

### Dimensions

LOA	185,09 m
Breadth over all	23,70 m
Depth	4,33 m
Draught [S]	9,80 m
Draught ( Ballast)	F=5,41 / A=7,11

### Speed & Consumption

abt. 14,0 kn at 7.047 kW	
Sea	27,0 t ifo 380
Port	2,5 t without crane 4,5 t with cranes
Sailing range about 16.000 nautical miles	

### Gear

Cranes	3 x 30 t SWL at 22 m
--------	----------------------

### Permissible loads

Tanktop	20,00 t / m <sup>2</sup>
Weatherdeck hatch	2,00 t / m <sup>2</sup>

### Main Engine Data

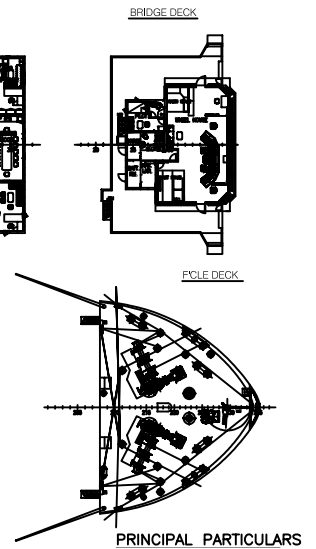
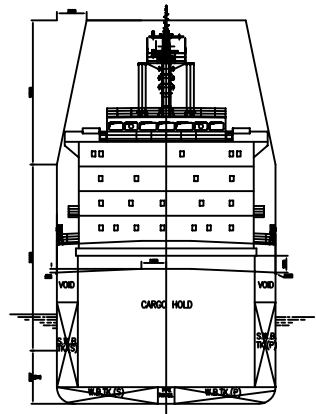
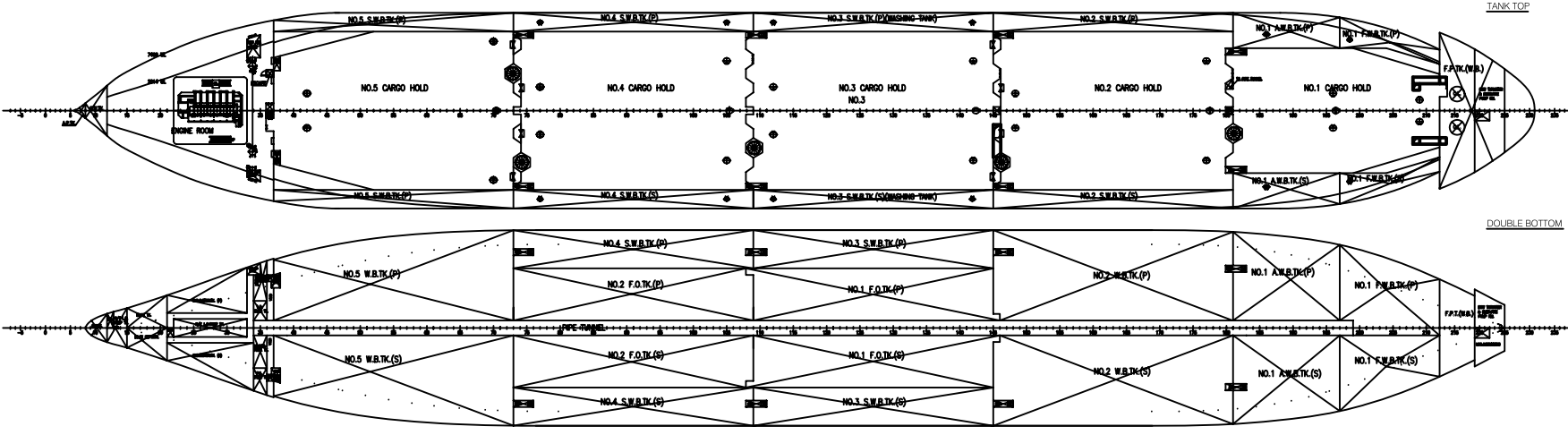
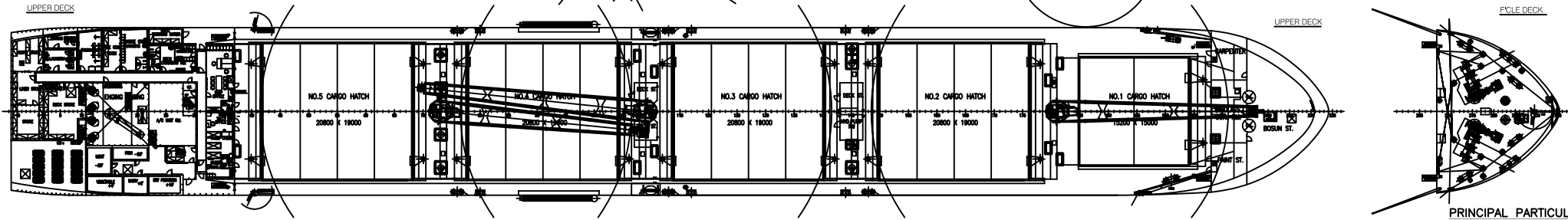
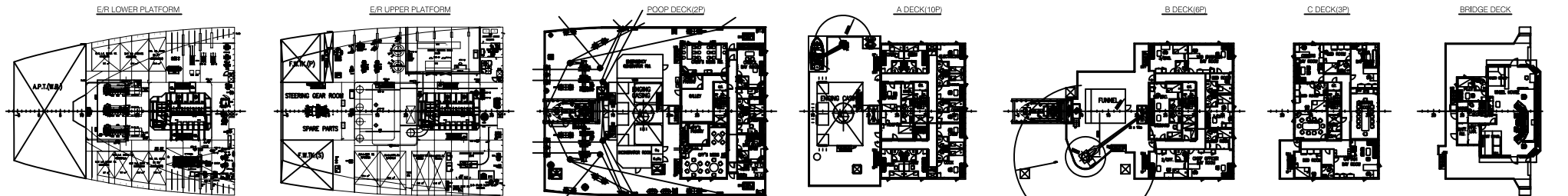
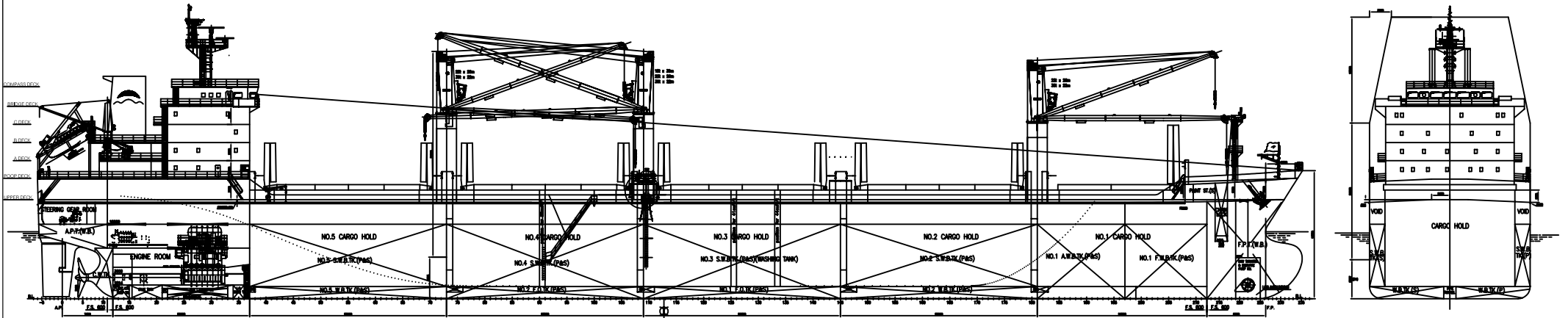
Main engine	HMM MAN-B&W 6S46 MC-C, 7.860 kW
Bow thruster	680 kW, electronic given

### Aux. Engine / Emergency Engine

Aux. engine	3 x ZJMD MAN-B&W 5L 23/30H (650 kW)
Emergency Engine	1 x SISU 620 DSRG, 120 kW

### Tank capacity

Fuel HFO	1.317,00 m <sup>3</sup>
Fuel MDO	168,00 m <sup>3</sup>
Ballast	11.073,10 m <sup>3</sup>
LO	102,7 m <sup>3</sup>



**PRINCIPAL PARTICULARS**

LENGTH O.A.	abt. 185.00 m
LENGTH B.P.	176.00 m
BREADTH MLD	23.50 m
BREADTH (EXTREME)	23.70 m
DEPTH MLD	14.10 m
DESIGNED DRAFT	9.60 m
SCANTLING DRAFT	9.80 m
DEADWEIGHT(±9.8m)	abt. 27000 t
CARGO CAPACITY	34280 m <sup>3</sup>
MAIN ENGINE	MAN-B&W 6S46MC-C 1 set
C.M.C.R	7050kW X 129.0r/min
C.S.R	6350kW X 124.5r/min
SERVICE SPEED (DESIGN DRAUGHT,CSR WITH1.5% S.M.)	abt. 14.0 kn
ENDURANCE	abt. 14800 n.mile
COMPLEMENT	21P + 1 Pilot + 1 Supercargo + 6 Suez Crew
CLASSIFICATION	G.L. 100 As E, Bulk Carrier, G. ESP. IW, BWM-S
	SOLAS-II-2 Reg.19, Holds No.1,3,5 may be empty or Holds No.2 + 4 may be empty at draught not exceeding 8.5 m + MC E/AUT

NO.	27000WT BULK CARRIER	DATE	2024.03.28
NO.	27000 D D D	SCALE	1:100
NO.	GENERAL ARRANGEMENT PLAN	DESIGNER	SDARI
NO.	D D D	DATE	2024.03.28